

CONE PENETRATION TEST

TEST NO : 01

FILE / JOB NO : ABC123
SHEET : 1 OF 2

METHOD: Robertson 1990

METHOD: Robertson et al. 1986

PROJECT : ASTRA Sample AGS Project
LOCATION : Somewhere

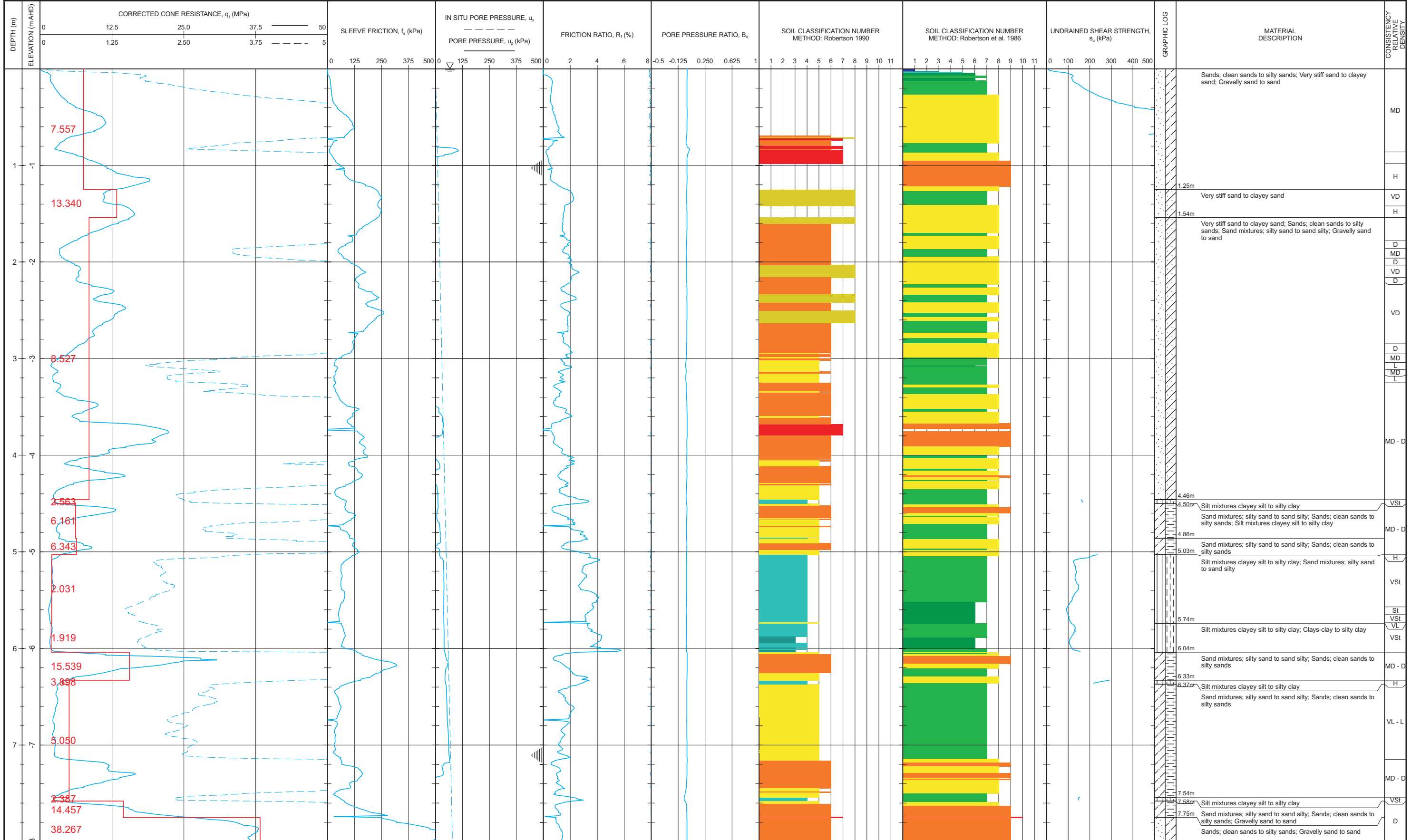
POSITION : SURFACE ELEVATION : 0.000 (AHD) ANGLE FROM HORIZONTAL : 90°

RIG TYPE : MOUNTING : CONTRACTOR : DATGEL

DATE STARTED : 18/09/07 DATE COMPLETED : DATE LOGGED : LOGGED BY : A. SMITH CHECKED BY :

CONE SERIAL No. : C10CFIP.D71 TEST TYPE : C

- | | | | |
|---|------------------------------------|-------------------------------------|------------------------------|
| 1 - Sensitive, fine grained | 7 - Gravelly sand to sand | 1 - Sensitive fine grained material | 7 - Silty sand to sandy silt |
| 2 - Organic soil-peats | 8 - Very stiff sand to clayey sand | 2 - Organic material | 8 - Sand to silty sand |
| 3 - Clays-clay to silty clay | 9 - Very stiff fine grained | 3 - Clay | 9 - Sand |
| 4 - Silt mixtures clayey silt to silty clay | | 4 - Silty clay to clay | 10 - Gravelly sand to sand |
| 5 - Sand mixtures; silty sand to sand silty | | 5 - Clayey silt to silty clay | 11 - Very stiff fine grained |
| 6 - Sands; clean sands to silty sands | | 6 - Sandy silt to clayey silt | 12 - Sand to clayey sand |



See Explanatory Notes for details of abbreviations & basis of descriptions.



DATGEL - DATA SOLUTIONS, NSW

